

15T Series



15W 3-Channel

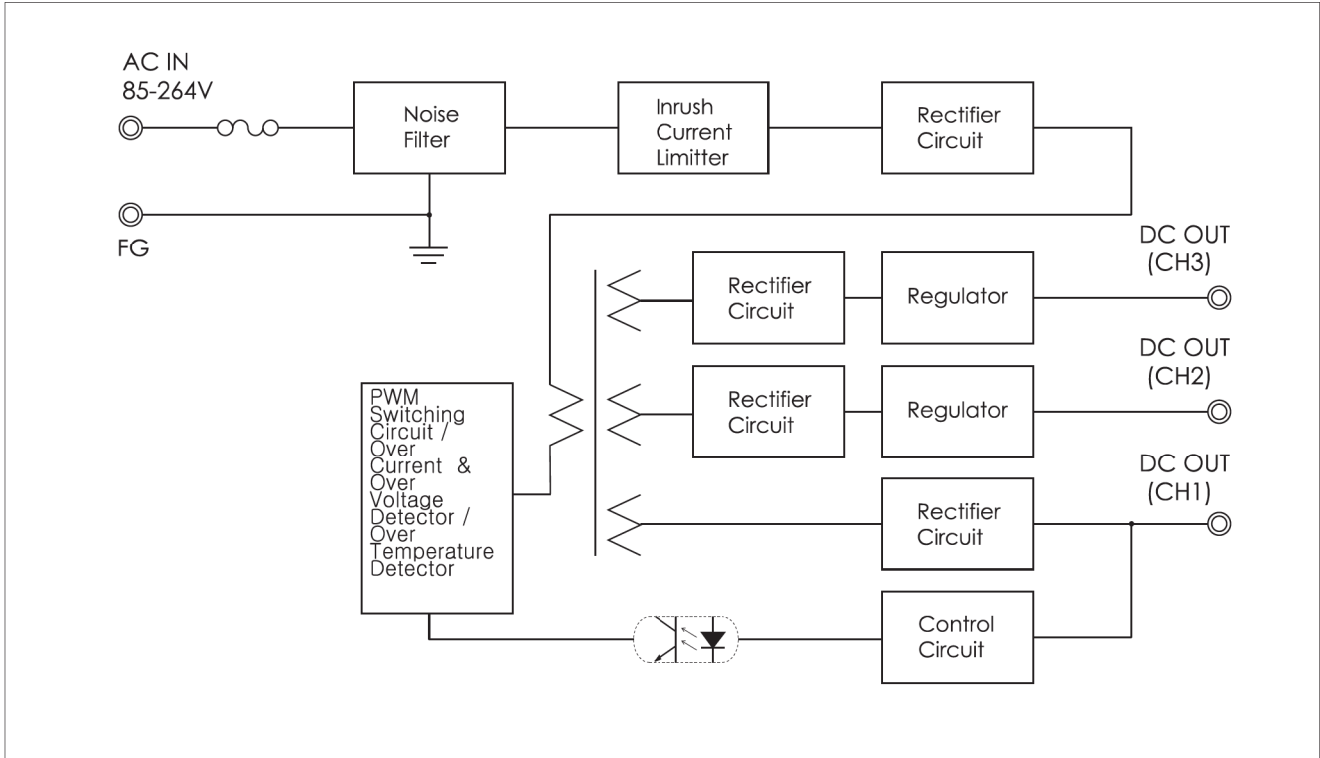
- **5V2A 12V0.3A -12V0.2A/
5V2A 15V0.3A -15V0.2A
3-Channel Output**
- **Wide Input Voltage Range
(AC85-264V)**
- **Built-in Inrush Current
Limiter, Over Current
Protector and Over
Voltage Protector**
- **Over Temperature
Protection**
- **Auto-Restart Mode**

SPECIFICATIONS

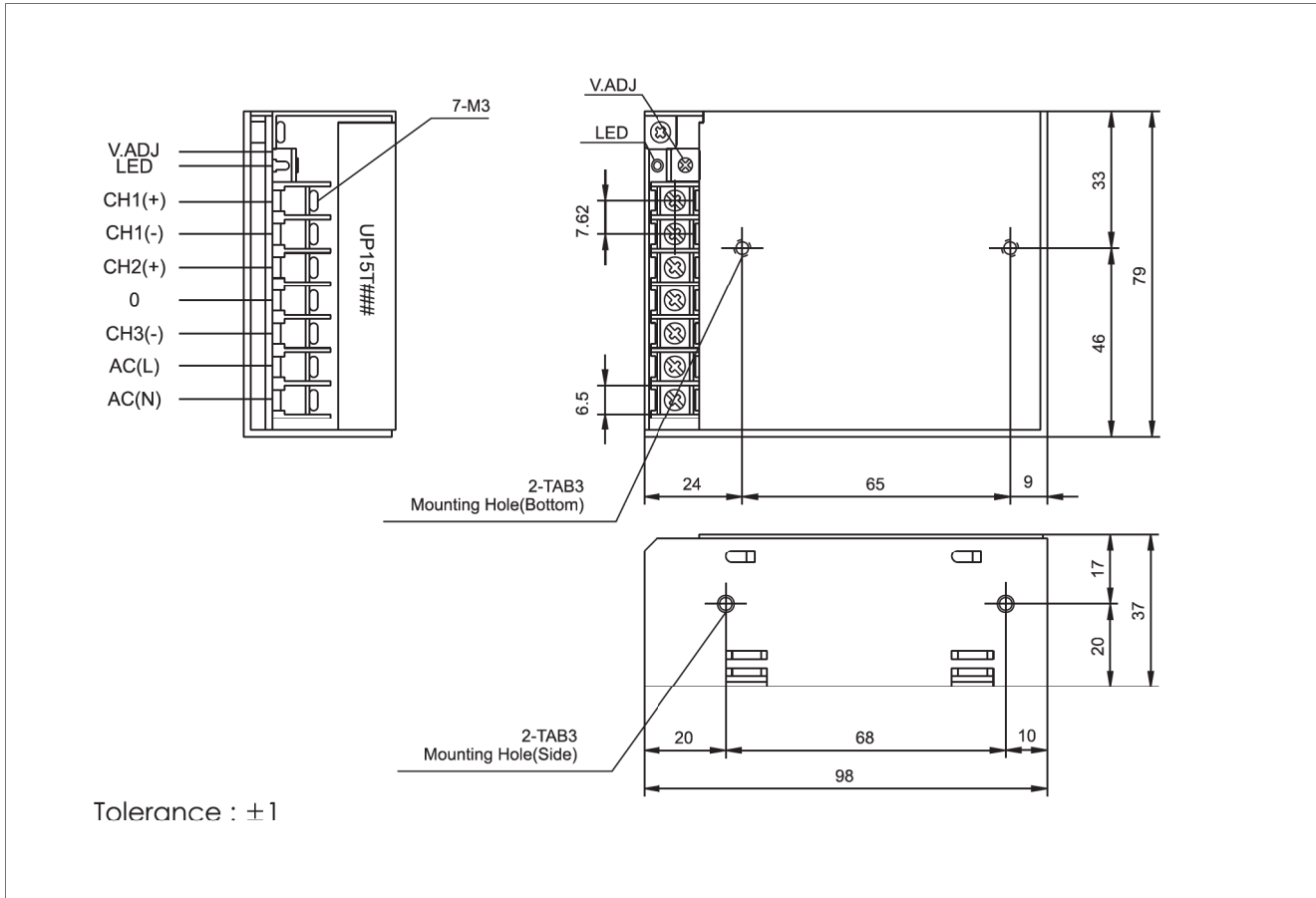
| Item | | UP15TACC | | | UP15TADD | | |
|--------------|-------------------------------|---|------------|------------|--|------------|------------|
| INPUT | VOLTAGE | AC85~264V | | | 0.4A typ (ACIN 110V, Io=100%) 0.2A typ (ACIN 220V, Io=100%) | | |
| | FREQUENCY | 50/60Hz(47~63Hz) | | | | | |
| | EFFICIENCY | 60% Typ | | | 60% Typ | | |
| | INRUSH CURRENT | 20A Typ(ACIN 110V, Io=100%)/40A Typ(ACIN 220V, Io=100%) at cold start | | | | | |
| OUTPUT | VOLTAGE [V] | 5 | 12 | -12 | 5 | 15 | -15 |
| | CURRENT [A] | 2.0 | 0.3 | 0.2 | 2.0 | 0.3 | 0.2 |
| | LINE REGULATION [mV] | 25 Max | 60 Max | 60 Max | 25 Max | 75 Max | 75 Max |
| | LOAD REGULATION [mV] | 50 Max | 120 Max | 120 Max | 50 Max | 150 Max | 150 Max |
| | RIPPLE [mVp-p] | 50 Max | 120 Max | 120 Max | 50 Max | 150 Max | 150 Max |
| | RIPPLE NOISE [mVp-p] | 100 Max | 170 Max | 170 Max | 100 Max | 200 Max | 200 Max |
| | TEMPERATURE DRIFT,0-50°C [mV] | 50 Max | 120 Max | 120 Max | 50 Max | 150 Max | 150 Max |
| | RISE TIME [msec] | 100 Max (ACIN 85V, Io=100%) | | | | | |
| | HOLDING TIME [msec] | 10 Typ(ACIN 85V, Io=100%) | | | | | |
| PROTEC-TION | OVER CURRENT PROTECTION | Works at over 110% of rating and recovers automatically | | | | | |
| | OVER VOLTAGE PROTECTION | Works at 115~140% of rating | | | | | |
| ISOLAT-ION | INPUT-OUTPUT | AC3,000V for 1 minute, DC500V 100Mohm (At room temp. & humid.) | | | | | |
| | INPUT-CASE, FG | AC1,500V for 1 minute, DC500V 100Mohm (At room temp. & humid.) | | | | | |
| | OUTPUT-CASE | AC500V for 1 minute, DC500V 100Mohm (At room temp. & humid.) | | | | | |
| ENVIRON-MENT | OPERATING TEMP. & HUMID. | -10~+50°C, 20~90%RH(Non condensing) | | | | | |
| | STORAGE TEMP. & HUMID. | -20~+75°C, 20~90%RH(Non condensing) | | | | | |
| | VIBRATION | 10~55Hz at 1G 3 minutes period, 30 minutes along X, Y and Z axis | | | | | |
| | IMPACT | 10G for 20 msec, Once on each X, Y and Z axis | | | | | |
| | APPROVALS | | | | | | |

15T Series

BLOCK DIAGRAM



DIMENSIONS(UNITS : MM)



S.M.P.S