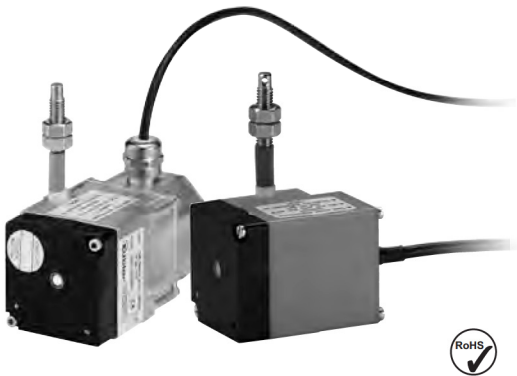


## Draw wire encoder Miniature draw wire encoder with analogue output



The miniature draw wire encoder with analogue output is characterised by its compact design. It is available with a potentiometer, voltage or current output.

### Compact and simple

- Measuring length up to 2000 mm
- For applications with a low traversing speed
- Easy to install

### Order code

D5 . 3 5 0 X . A X X X . 0 0 0 0

①
②
③

#### ① Measuring range

- 1 = 1000 mm
- 2 = 2000 mm

#### ② Analogue sensor output

- 11 = 4...20 mA
- 22 = 0...10 V
- Supply voltage 15...28 VDC
- 33 = Potentiometer 10 kΩ

#### ③ Type of connection

- 1 = Cable 2 m (for measuring range 1000 mm axial)
- (for measuring range 2000 mm radial)
- 2 = M12 connector, 4-pin radial (only available for measuring range 2000 mm)

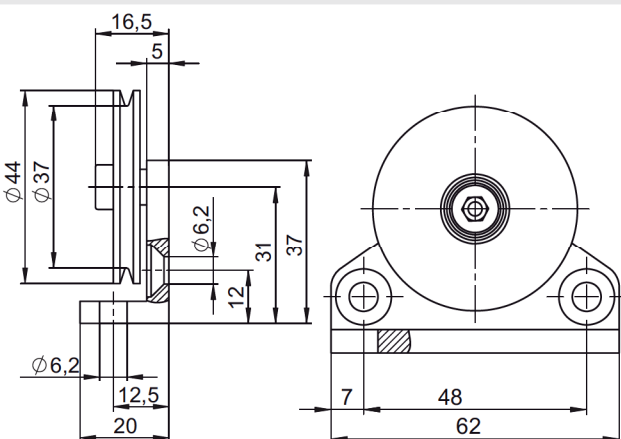
### Accessories:



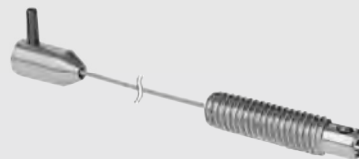
#### Guide pulley

Ordering information for the set (guide pulley, 2x countersunk screws for lateral fixing, 2x socket screws for fixing on a flat surface)

Order code: 8.0000.7000.0045

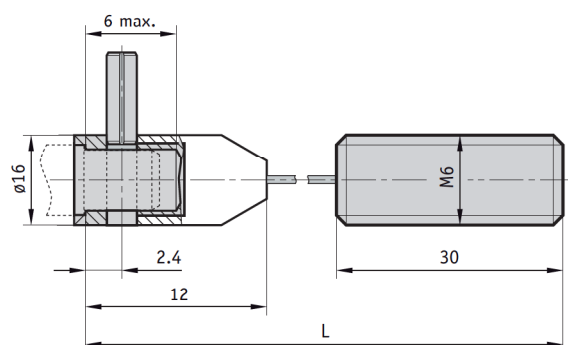


#### Extension cable



- Extension cable, steel wire 2000 mm:
- Extension cable, steel wire 5000 mm:
- Extension cable, steel wire 10000 mm:
- Extension cable, parraleine 2000 mm:

- Order code: 8.0000.7000.0033
- Order code: 8.0000.7000.0034
- Order code: 8.0000.7000.0035
- Order code: 8.0000.7000.0032



# Linear Measuring Technology

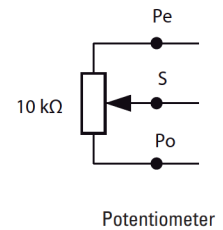
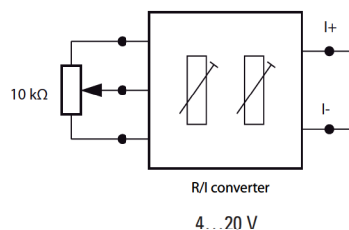
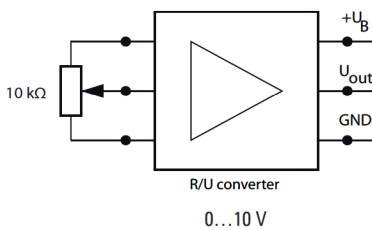
## Draw wire encoder      Miniature draw wire encoder with analogue output

Mechanical characteristics:	
Measuring range:	1000 mm / 2000 mm
Extension force F min:	2N
Repeat accuracy:	± 0,15 mm
Linearity:	± 0,35 %
Working temperature:	0...50 °C
Weight:	ca. 200 g / ca. 320 g
<b>Materials</b>	
Housing:	Plastic / Zinc die cast
Wire:	stainless-steel
	Ø 0,45 mm
	plastic-coated

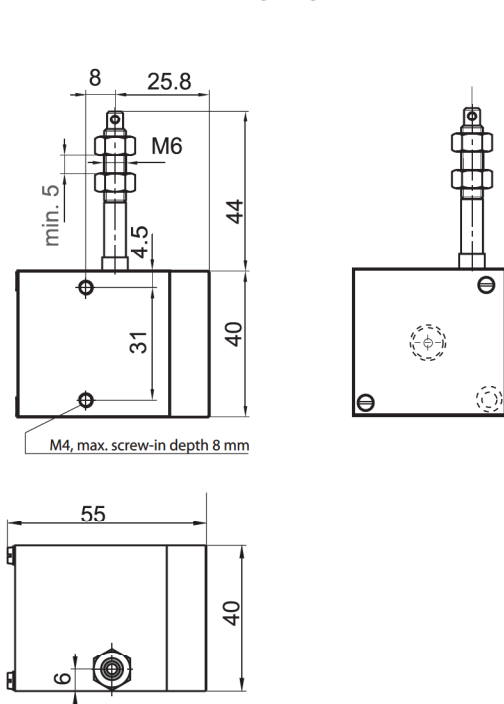
Electrical characteristics:			
Analogue output:	0...10 V	4...20 mA	Potentiometer 10 kΩ
Supply voltage:	15...28 V DC	–	–
Temperature range:	0...50 °C	0...50 °C	0...50 °C
Load:	max 500 Ω	max 500 Ω	–
Conforms to CE requirements acc. To EN 61000-6-2, EN 61000-6-4 and EN 61000-6-3			

### Terminal assignment

Cable colour	PIN (M12)	0...10 V	0...20 mA	Potentiometer
brown	1	+ 24 VDC	I +	Po
white	2	GND	I -	Pe
green	3	U out	n.c.	S



### Dimensions for measuring range 1000 mm



### Dimensions for measuring range 2000 mm

