



안전인증서 Safety Certificate

안전인증번호 : JU11401-18002
 (Certificate No.)
제조업자/수입업자명 : CHANGZHOU CHUANGLIAN POWER SUPPLY TECHNOLOGY CORPORATION
 (Manufacturer/importer)
주소 : 8,TONGZIHE WEST ROAD,BELL TOWER ECONOMIC DEVELOPMENT ZONE,CHANGZHOU,JIANGSU,CHINA
 (Address)
제품명 : 조명기구용컨버터(LED램프용)
 (Product) Converter for luminaires (LED lamps)
기본모델명 : A-35FAL-12
 (Basic Model)
파생모델명 : A-35FAL-24
 (Series Model)
정격/안전기준상의 모델구분 : 220 V~, 60 Hz, 35 W
 (Rating)
시험기준 : KC61347-1(2015-09), KC61347-2-13(2015-09)
 (Standard)

본 인증서는 제조국명 : 중국
 제조업자명 : CHANGZHOU CHUANGLIAN POWER SUPPLY TECHNOLOGY CORPORATION의 제품에만 해당함
 제조공장의 주소 : 8,TONGZIHE WEST ROAD,BELL TOWER ECONOMIC DEVELOPMENT ZONE,CHANGZHOU,JIANGSU,CHINA

「전기용품 및 생활용품 안전관리법 시행규칙」 제9조제2항·제4항 또는 제10조제2항에 따라 안전인증서를 발급합니다.

We issue this Safety Certificate for the above appliances in accordance with the Article 9(2), 9(4) or 10(2) of the Enforcement Rule of the Electrical Appliances and Consumer Products Safety Control Act.

2018년 06월 07일
year month day

KTR 한국화학융합시험연구원
KOREA TESTING & RESEARCH INSTITUTE



※ 이 인증서는 「전기용품 및 생활용품 안전관리법」에 따른 제품의 안전성 확인에 한정된 것이며, 그 밖의 다른 법률이 적용되는 제품의 경우에는 해당 법률에 따라 추가로 인증·허가 등을 받아야 합니다.

첨부서류	1. 전기용품의 안전관리부품 및 재질목록(List of Critical Components) 2. 기본모델·파생모델의 내용(Descriptions of the basic and series model)
------	---

※ 안전인증 시의 조건 : 동 제품의 생산 시 자체검사를 실시하고 안전인증 시 등록된 부품목록 및 임의 변경하지 말 것.



안전인증번호(Certification No.) : JU11401-18002

[붙임 1 : 전기용품의 안전관리부품 및 재질목록] [Attachment 1 : List of Critical Components]				
부품명(회로기호) Component(Part no.)	제조사(상표명) Manufacturer(Brand)	모델명(형식) Model(Type)	정격 또는 특성 (Technical data)	인증마크 (Mark(s))
Terminal Blocks	CIXI WANJIE ELECTRON CO LTD	WJ46	300 V~, 20 A	UL
Fuse	Honghu Bluelight Electronic Co., Ltd.	6ET 3.15A	250 V~, 3.15 A	KC
X-Cap	Winday Electronic Industrial Co., Ltd.	MPX	275 V~, 0.22 uF, X2	KC
Y-Cap(C4)	Shantou High-New Technology Development Zone Songtian Enterprise Co., Ltd	CE	250 V~, 1 nF, Y2	KC
Y-Cap(C24)	Xiamen Wanming Electronics Co., Ltd.	HM(Y2)	250 V~, 0.47 nF, Y2	KC
Y-Cap(C30)	Xiamen Wanming Electronics Co., Ltd.	HM(Y2)	250 V~, 4.7 nF, Y2	KC
Line Filter	Changzhou Tongyi Electronics Co.,Ltd.	YZ1615-10mH	15 mH, Class B	-
Transformer	Changzhou Chuanglian Power Supply Technology Corporation	A-35AL-12	420 uH, Class B	-
P.C.B	CHANGZHOU KELONG ELECTRONICS CO LTD	-	CEM-1, 1.6 T	-
Insulation sheet	GARWARE POLYSTER LTD	-	PET	-
Enclosure	DAECHANG Aluminum Technology	-	AL	-

※ 주의사항(Attention)

- 안전관리부품은 전기적인 안전에 직접적인 영향을 주는 부품으로서 안전인증기관이 정기공장 검사시 확인 및 관리하는 사항입니다. 따라서 상기목록에 기재된 사항을 변경하거나 또는 복수등재를 원하시는 경우는 안전인증 기관에 인증변경 신청을 하여야 합니다.
(As the critical components and parts are directly related with safety, these components shall be checked during a factory inspection by the certification body. In case of applying for multiple listings or changes for the items above, the certification revision shall be applied.)
- 인증변경신청 없이 임의로 변경하는 경우는 전기용품 및 생활용품 안전관리법 제 11조 및 제20조 제1항의 규정에 의한 안전인증 취소사유가 됨을 유의하시기 바랍니다.
(The safety certification will be cancelled under the Electrical Appliances and Consumer Products Safety Control Act, Clause 1 of Article 11 and 20 if the contents of the certification are altered without prior authorization.)

안전인증번호(Certification No.) : JU11401-18002

[붙임 2 : 기본모델 · 파생모델의 내용]

[Attachment 2 : General Description of Certified Products]

파생모델명 (Series model(s))	기본모델과의 차이점 (Difference between the basic and variant models)	비고 (Remarks)
A-35FAL-24	o Different rated output voltage from basic model (24 V)	

안전인증번호(Certification No.) : JU11401-18002

[붙임 2 : 기본모델 · 파생모델의 내용]

[Attachment 2 : General Description of Certified Products]

제품 및 시험특기사항 (Features and Specifications)

o Specifications

- Internal type
- Rating : 220 V~, 60 Hz, 0.35 A
- Rated power consumption : 35 W
- Constant-Voltage
- Rated output voltage : 12 Vd.c.
- Application lamp and a number of light : LED lamp (module)
- Power factor : 0.6C

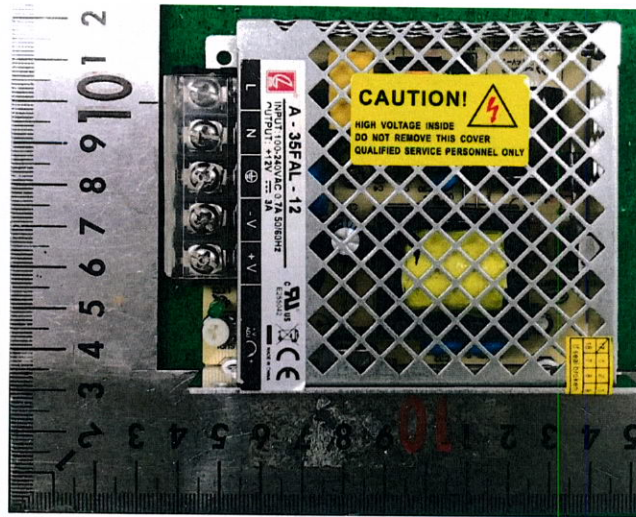
※ 본 제품의 시험내용에 관하여 의문사항이 있으시면 아래 연락처로 문의하여 주시기 바랍니다.

시험담당자 연락처 : Tel : 02-2164-1426 Fax : 02-507-8397

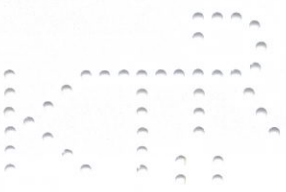
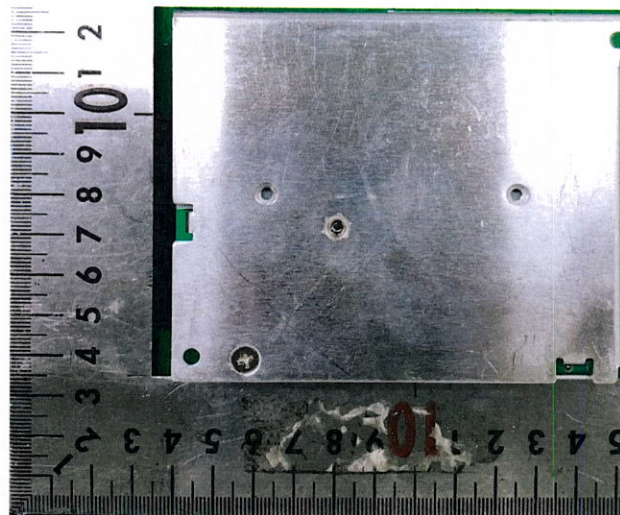
(If you have any questions on product testing contents, please contact the following : Tel : 82-2-2164-1426 Fax : 82-2-507-8397)

안전인증번호(Certification No.) : JU11401-18002

〈사진1〉



〈사진2〉



□ 별첨 5 : 표시사항 및 주의 또는 경고문구
Marking plate and caution or warning

표시사항
(Marking plate)



품 명 : 조명기구용컨버터(LED램프용)
모 델 명 : A-35FAL-12
정격 입력 전압, 주파수, 전류 : 220 V~, 60 Hz, 0.35 A
정격전력 : 35 W
tc : 70 °C, ta : -10 °C ~ 50 °C
정전압형
정격출력전압 : 12 Vd.c.
역율 : 0.6C
적용램프 및 등수 : LED램프(모듈)
결 선 도 : -
제 조 자 : CHANGZHOU CHUANGLIAN POWER SUPPLY TECHNOLOGY CORPORATION
제조국 또는 원산지 : Made In China
제조년월 : 20xx년 xx월
A/S 전화 : xx-xxxx-xxxx

주의 또는 경고문구
(Caution or Warning)

설명서를 읽으시오.



IMPROVED CERTIFICATIONS SEARCH TOOL. REGISTER NOW!

[▶ LEARN MORE](#)**QQGQ2.E255042****Power Supplies, Information Technology Equipment Including Electrical Business Equipment - Component**[Page Bottom](#)**Power Supplies, Information Technology Equipment Including Electrical Business Equipment - Component**[See General Information for Power Supplies, Information Technology Equipment Including Electrical Business Equipment - Component](#)**CHANGZHOU CHUANGLIAN POWER SUPPLY TECHNOLOGY CORPORATION**

E255042

NO 8 WEST RD

TONGZI RIVER ECONOMIC DEVELOPMENT ZONE

ZHONGLOU DISTRICT

CHANGZHOU, JIANGSU 213023 CHINA

Model No.	Rated Input			Max Output				SP	EP	FC	GC
	Volts	Hz	SC	V	A	VA	OC				
A-100FAN-12	100-240Vac	50/60	0	12dc	8.5	102	2	60950-1, 2nd Ed+AM1+AM2	20B	0	1
A-100FAN-15	100-240Vac	50/60	0	15dc	7	105	2	60950-1, 2nd Ed+AM1+AM2	20B	0	1
A-100FAN-24	100-240Vac	50/60	0	24dc	4.5	108	2	60950-1, 2nd Ed+AM1+AM2	20B	0	1
A-100FAN-36	100-240Vac	50/60	0	36dc	2.8	100.8	2	60950-1, 2nd Ed+AM1+AM2	20B	0	1
A-100FAN-48	100-240Vac	50/60	0	48dc	2.3	110.4	2	60950-1, 2nd Ed+AM1+AM2	20B	0	1
A-150FAO-12	100-120V or 200-240Vac	50/60	0	12dc	12.5	150	2	60950-1, 2nd Ed+AM1+AM2	20B	0	1
A-150FAO-15	100-120V or 200-240Vac	50/60	0	15dc	10	150	2	60950-1, 2nd Ed+AM1+AM2	20B	0	1
A-150FAO-24	100-120V or 200-240Vac	50/60	0	24dc	6.5	156	2	60950-1, 2nd Ed+AM1+AM2	20B	0	1
A-150FAO-36	100-120V or 200-240Vac	50/60	0	36dc	4.3	154.8	2	60950-1, 2nd Ed+AM1+AM2	20B	0	1
A-150FAO-48	100-120V or 200-240Vac	50/60	0	48dc	3.3	158.4	2	60950-1, 2nd Ed+AM1+AM2	20B	0	1
A-200FAH-2.8HP (Power Supplies)[*r]											
	110-240Vac	50/60	0	2.8Vdcdc	40A	-	3	60950-1, 2nd Ed+AM1+AM2	20B	0	1
A-200FAH-3.3HP (Power Supplies)[*r]											
	110-240Vac	50/60	0	3.3Vdcdc	40A	-	3	60950-1, 2nd Ed+AM1+AM2	20B	0	1

A-200FAH-4.2HP (Power Supplies)[*r]											
	110-240Vac	50/60	0	4.2Vdcdc	40A	-	3	60950-1, 2nd Ed+AM1+AM2	20B	0	1
A-200FAH-5HP (Power Supplies)[*r]											
	110-240Vac	50/60	0	5Vdcdc	40A	-	3	60950-1, 2nd Ed+AM1+AM2	20B	0	1
A-200FAK-12[*r]	100-120V or 200-240Vac	50/60	0	12dc	17	204	2	60950-1, 2nd Ed+AM1+AM2	20B	0	1
A-200FAK-15[*r]	100-120V or 200-240Vac	50/60	0	15dc	14	210	2	60950-1, 2nd Ed+AM1+AM2	20B	0	1
A-200FAK-24[*r]	100-120V or 200-240Vac	50/60	0	24dc	8.8	211.2	2	60950-1, 2nd Ed+AM1+AM2	20B	0	1
A-200FAK-3.3[*r]	100-120V or 200-240Vac	50/60	0	3.3dc	40	132	2	60950-1, 2nd Ed+AM1+AM2	20B	0	1
A-200FAK-36[*r]	100-120V or 200-240Vac	50/60	0	36dc	5.9	212.4	2	60950-1, 2nd Ed+AM1+AM2	20B	0	1
A-200FAK-4.2[*r]	100-120V or 200-240Vac	50/60	0	4.2dc	40	168	2	60950-1, 2nd Ed+AM1+AM2	20B	0	1
A-200FAK-48[*r]	100-120V or 200-240Vac	50/60	0	48dc	4.4	211.2	2	60950-1, 2nd Ed+AM1+AM2	20B	0	1
A-200FAK-5[*r]	100-120V or 200-240Vac	50/60	0	5dc	40	200	2	60950-1, 2nd Ed+AM1+AM2	20B	0	1
A-300FAA-12	110-120/200-240ac	50/60	0	12dc	25	300	3	60950-1, 2nd Ed+AM1+AM2	20B	1	1
A-300FAA-15	110-120/200-240ac	50/60	0	15dc	25	375	3	60950-1, 2nd Ed+AM1+AM2	20B	1	1
A-300FAA-2.8	110-120/200-240ac	50/60	0	2.8dc	60	168	3	60950-1, 2nd Ed+AM1+AM2	20B	1	1
A-300FAA-20	110-120/200-240ac	50/60	0	20dc	15	300	3	60950-1, 2nd Ed+AM1+AM2	20B	1	1
A-300FAA-24	110-120/200-240ac	50/60	0	24dc	12.5	300	3	60950-1, 2nd Ed+AM1+AM2	20B	1	1
A-300FAA-3.3	110-120/200-240ac	50/60	0	3.3dc	60	198	3	60950-1, 2nd Ed+AM1+AM2	20B	1	1
A-300FAA-4.2	110-120/200-240ac	50/60	0	4.2dc	60	252	3	60950-1, 2nd Ed+AM1+AM2	20B	1	1
A-300FAA-5	110-120/200-240ac	50/60	0	5dc	60	300	3	60950-1, 2nd Ed+AM1+AM2	20B	1	1
A-300FAD-12P[*r]	110-240ac	50/60	0	12dc	25	300	3	60950-1, 2nd Ed+AM1+AM2	20B	1	1
A-300FAD-15P[*r]	110-240ac	50/60	0	15dc	20	300	3	60950-1, 2nd Ed+AM1+AM2	20B	1	1
A-300FAD-2.8P[*r]	110-240ac	50/60	0	2.8dc	60	168	3	60950-1, 2nd Ed+AM1+AM2	20B	1	1
A-300FAD-20P[*r]	110-240ac	50/60	0	20dc	15	300	3	60950-1, 2nd Ed+AM1+AM2	20B	1	1
A-300FAD-24P[*r]	110-240ac	50/60	0	24dc	12.5	300	3	60950-1, 2nd Ed+AM1+AM2	20B	1	1
A-300FAD-3.3P[*r]	110-240ac	50/60	0	3.3dc	60	198	3	60950-1, 2nd Ed+AM1+AM2	20B	1	1
A-300FAD-5P[*r]	110-240ac	50/60	0	5dc	60	300	3	60950-1, 2nd Ed+AM1+AM2	20B	1	1

A-350FAA-12	110-120/200-240ac	50/60	0	12dc	29.2	350.4	3	60950-1, 2nd Ed+AM1+AM2	20B	1	1
A-350FAA-15	110-120/200-240ac	50/60	0	15dc	23.3	349.5	3	60950-1, 2nd Ed+AM1+AM2	20B	1	1
A-350FAA-2.8	110-120/200-240ac	50/60	0	2.8dc	70	196	3	60950-1, 2nd Ed+AM1+AM2	20B	1	1
A-350FAA-20	110-120/200-240ac	50/60	0	20dc	17.5	350	3	60950-1, 2nd Ed+AM1+AM2	20B	1	1
A-350FAA-24	110-120/200-240ac	50/60	0	24dc	14.6	350.4	3	60950-1, 2nd Ed+AM1+AM2	20B	1	1
A-350FAA-3.3	110-120/200-240ac	50/60	0	3.3dc	70	231	3	60950-1, 2nd Ed+AM1+AM2	20B	1	1
A-350FAA-4.2	110-120/200-240ac	50/60	0	4.2dc	70	294	3	60950-1, 2nd Ed+AM1+AM2	20B	1	1
A-350FAA-5	110-120/200-240ac	50/60	0	5dc	70	350	3	60950-1, 2nd Ed+AM1+AM2	20B	1	1
A-350FAK-12[*r]	100-120V or 200-240Vac	50/60	0	12dc	29	348	2	60950-1, 2nd Ed+AM1+AM2	20B	0	1
A-350FAK-15[*r]	100-120V or 200-240Vac	50/60	0	15dc	23.2	348	2	60950-1, 2nd Ed+AM1+AM2	20B	0	1
A-350FAK-24[*r]	100-120V or 200-240Vac	50/60	0	24dc	14.5	348	2	60950-1, 2nd Ed+AM1+AM2	20B	0	1
A-350FAK-3.3[*r]	100-120V or 200-240Vac	50/60	0	3.3dc	60	198	2	60950-1, 2nd Ed+AM1+AM2	20B	0	1
A-350FAK-36[*r]	100-120V or 200-240Vac	50/60	0	36dc	9.7	349.2	2	60950-1, 2nd Ed+AM1+AM2	20B	0	1
A-350FAK-4.2[*r]	100-120V or 200-240Vac	50/60	0	4.2dc	60	252	2	60950-1, 2nd Ed+AM1+AM2	20B	0	1
A-350FAK-48[*r]	100-120V or 200-240Vac	50/60	0	48dc	7.3	350.4	2	60950-1, 2nd Ed+AM1+AM2	20B	0	1
A-350FAK-5[*r]	100-120V or 200-240Vac	50/60	0	5dc	60	300	2	60950-1, 2nd Ed+AM1+AM2	20B	0	1
A-35FAL-12[*r]	100-240Vac	50/60	0	12dc	3	36	3	60950-1, 2nd Ed+AM1+AM2	20B	1	1
A-35FAL-15[*r]	100-240Vac	50/60	0	15dc	2.4	36	3	60950-1, 2nd Ed+AM1+AM2	20B	1	1
A-35FAL-24[*r]	100-240Vac	50/60	0	24dc	1.5	36	3	60950-1, 2nd Ed+AM1+AM2	20B	1	1
A-35FAL-36[*r]	100-240Vac	50/60	0	36dc	1	36	3	60950-1, 2nd Ed+AM1+AM2	20B	1	1
A-35FAL-48[*r]	100-240Vac	50/60	0	48dc	0.8	38.4	3	60950-1, 2nd Ed+AM1+AM2	20B	1	1
A-35FAL-5[*r]	100-240Vac	50/60	0	5dc	7	35	3	60950-1, 2nd Ed+AM1+AM2	20B	1	1
A-400FAA-12	110-120/200-240ac	50/60	0	12dc	33	396	3	60950-1, 2nd Ed+AM1+AM2	20B	1	1
A-400FAA-15	110-120/200-240ac	50/60	0	15dc	26.5	397.5	3	60950-1, 2nd Ed+AM1+AM2	20B	1	1
A-400FAA-2.8[*r]	110-120/200-240ac	50/60	0	2.8dc	80	224	3	60950-1, 2nd Ed+AM1+AM2	20B	1	1
A-400FAA-20	110-120/200-240ac	50/60	0	20dc	20	400	3	60950-1, 2nd Ed+AM1+AM2	20B	1	1

A-400FAA-24	110-120/200-240ac	50/60	0	24dc	16.6	398.4	3	60950-1, 2nd Ed+AM1+AM2	20B	1	1
A-400FAA-3.3[*r]	110-120/200-240ac	50/60	0	2.8dc	80	224	3	60950-1, 2nd Ed+AM1+AM2	20	1	1
A-400FAA-4.2[*r]	110-120/200-240ac	50/60	0	-	-	-	-	60950-1, 2nd Ed+AM1+AM2	20B	1	1
				4.2dc	80	336	3				
A-400FAA-5	110-120/200-240ac	50/60	0	5dc	80	400	3	60950-1, 2nd Ed+AM1+AM2	20B	1	1
A-50FAL-12[*r]	100-240Vac	50/60	0	12dc	4.2	50.4	3	60950-1, 2nd Ed+AM1+AM2	20B	1	1
A-50FAL-15[*r]	100-240Vac	50/60	0	15dc	3.4	51	3	60950-1, 2nd Ed+AM1+AM2	20B	1	1
A-50FAL-24[*r]	100-240Vac	50/60	0	24dc	2.2	52.8	3	60950-1, 2nd Ed+AM1+AM2	20B	1	1
A-50FAL-3.3[*r]	100-240Vac	50/60	0	3.3dc	10	33	3	60950-1, 2nd Ed+AM1+AM2	20B	1	1
A-50FAL-36[*r]	100-240Vac	50/60	0	36dc	1.45	52.2	3	60950-1, 2nd Ed+AM1+AM2	20B	1	1
A-50FAL-48[*r]	100-240Vac	50/60	0	48dc	1.1	52.8	3	60950-1, 2nd Ed+AM1+AM2	20B	1	1
A-50FAL-5[*r]	100-240Vac	50/60	0	5dc	10	50	3	60950-1, 2nd Ed+AM1+AM2	20B	1	1
A-75FAM-12	100-240ac	50/60	0	12dc	6	72	3	60950-1, 2nd Ed+AM1+AM2	20B	1	1
A-75FAM-15[*r]	100-240ac	50/60	0	15dc	5	75	3	60950-1, 2nd Ed+AM1+AM2	20B	1	1
A-75FAM-24[*r]	100-240Vac	50/60	0	24dc	3.15	75.6	3	60950-1, 2nd Ed+AM1+AM2	20B	1	1
A-75FAM-36[*r]	100-240Vac	50/60	0	36dc	2.1	75.6	3	60950-1, 2nd Ed+AM1+AM2	20B	1	1
A-75FAM-48[*r]	100-240Vac	50/60	0	48dc	1.6	76.8	3	60950-1, 2nd Ed+AM1+AM2	20B	1	1
A-75FAM-5[*r]	100-240ac	50/60	0	5dc	14	70	3	60950-1, 2nd Ed+AM1+AM2	20B	1	1
HTD-120F-A	100-120, 220-240ac	50/60	0	4.9dc	30.8	135	3	60950-1	-	0	0
				11.8dc	11.9	98	3				
HTD-120F-B	100-120, 220-240ac	50/60	0	5.02dc	12.1	57	3	60950-1	-	0	0
				26dc	5.2	124	3				
HTD-60F-A	100-240ac	50-60	0	5dc	4	-	3	60950-1	20B	0	1
				12dc	3	-	3				
HTD-60F-B	100-240ac	50-60	0	5dc	3	-	3	60950-1	20B	0	1
				24dc	1.8	-	3				
HTQ-120F-B[*r]	100-120, 220-240ac	50/60	0	5dc	11	-	3	60950-1	-	0	0
				12dc	4	-	3				
				-5dc	1	-	3				
				-12dc	1	-	3				

HTQ-120F-C	100-120, 220-240ac	50/60	0	5dc	16	76.5	3	60950-1	-	0	0
				14.9dc	16	77.6	3				
				-4.8dc	9.7	4.7	3				
				-14.7dc	4.8	38.5	3				
HTQ-120F-D	100-120, 220-240ac	50/60	0	5dc	29	124.3	3	60950-1	-	0	0
				12dc	15	112.5	3				
				23.8dc	8.5	131.5	3				
				-11.9dc	5.5	53	3				
HTQ-60F-A	100-240ac	50-60	0	5dc	5.5	-	3	60950-1	20B	0	1
				12dc	2	-	3				
				-12dc	0.5	-	3				
				-5dc	0.5	-	3				
HTQ-60F-B	100-240ac	50-60	0	5dc	5.5	-	3	60950-1	20B	0	1
				15dc	1.5	-	3				
				-15dc	0.5	-	3				
				-5dc	0.5	-	3				
HTQ-60F-C	100-240ac	50-60	0	5dc	4	-	3	60950-1	20B	0	1
				12dc	1	-	3				
				24dc	1	-	3				
				-12dc	0.5	-	3				
HTS-100F-12[*r]	115/230ac	50-60	0	12dc	8.3	-	3	60950-1	20B	0	1
HTS-100F-15[*r]	115/230ac	50-60	0	15dc	6.8	-	3	60950-1	20B	0	1
HTS-100F-24[*r]	115/230ac	50-60	0	24dc	4.2	-	3	60950-1	20B	0	1
HTS-100F-48[*r]	115/230ac	50-60	0	48dc	2.2	-	3	60950-1	20B	0	1
HTS-100F-5[*r]	115/230ac	50-60	0	5dc	20	-	3	60950-1	20B	0	1
HTS-100F-7.5[*r]	115/230ac	50-60	0	7.5dc	13.5	-	3	60950-1	20B	0	1
HTS-150F-12	110-120 220-240ac	50/60	0	12dc	12.5	150	3	60950-1	-	0	0
HTS-150F-13.5	110-120 220-240ac	50/60	0	13.5dc	11	150	3	60950-1	-	0	0
HTS-150F-15	110-120 220-240ac	50/60	0	15dc	10	150	3	60950-1	-	0	0
HTS-150F-24	110-120 220-240ac	50/60	0	24dc	6.5	150	3	60950-1	-	0	0
HTS-150F-27	110-120 220-240ac	50/60	0	27dc	5.6	150	3	60950-1	-	0	0
HTS-150F-3.3	110-120 220-240ac	50/60	0	3.3dc	30	100	3	60950-1	-	0	0
HTS-150F-	110-120 220-	50/60	0	48dc	3.1	150	3	60950-1	-	0	0

48	240ac										
HTS-150F-5	110-120 220-240ac	50/60	0	5dc	30	150	3	60950-1	-	0	0
HTS-150F-7.5	110-120 220-240ac	50/60	0	7.5dc	20	150	3	60950-1	-	0	0
HTS-150F-9	110-120 220-240ac	50/60	0	9dc	16.5	150	3	60950-1	-	0	0
HTS-15FA-12[*r]	100-240ac	50/60	0	12dc	1.3	-	3	60950-1, 2nd Ed + AM1	20B	0	1
HTS-15FA-15[*r]	100-240ac	50/60	0	15dc	1	-	3	60950-1, 2nd Ed + AM1	20B	0	1
HTS-15FA-24[*r]	100-240ac	50/60	0	24dc	0.7	-	3	60950-1, 2nd Ed + AM1	20B	0	1
HTS-15FA-48[*r]	100-240ac	50/60	0	48dc	0.35	-	3	60950-1, 2nd Ed + AM1	20B	0	1
HTS-15FA-5[*r]	100-240ac	50/60	0	5dc	3	-	3	60950-1, 2nd Ed + AM1	20B	0	1
HTS-210F-12 [*r]	100-120 / 200-240ac	50/60	0	12dc	17	-	3	60950-1	20B	0	0
HTS-210F-13.5 [*r]	100-120 / 200-240ac	50/60	0	13.5dc	15	-	3	60950-1	20B	0	0
HTS-210F-15 [*r]	100-120 / 200-240ac	50/60	0	15dc	14	-	3	60950-1	20B	0	0
HTS-210F-24	100-120 / 200-240ac	50/60	0	25dc	9.68	232	3	60950-1	20B	0	0
HTS-210F-27 [*r]	100-120 / 200-240ac	50/60	0	27dc	7.8	-	3	60950-1	20B	0	0
HTS-210F-36 [*r]	100-120 / 200-240ac	50/60	0	36dc	5.8	-	3	60950-1	20B	0	0
HTS-210F-48	100-120 / 200-240ac	50/60	0	48dc	4.6	219	3	60950-1	20B	0	0
HTS-210F-5	100-120 / 200-240ac	50/60	0	5.1dc	42.3	194	3	60950-1	20B	0	0
HTS-210F-7.5 [*r]	100-120 / 200-240ac	50/60	0	7.5dc	27	-	3	60950-1	20B	0	0
HTS-25F-12[*r]	100-240Vac	50/60	0	12dc	2.1	25.2	3	60950-1	20B	0	1
HTS-25F-15[*r]	100-240Vac	50/60	0	15dc	1.7	25.5	3	60950-1	20B	0	1
HTS-25F-24[*r]	100-240Vac	50/60	0	24dc	1.1	26.4	3	60950-1	20B	0	1
HTS-25F-5[*r]	100-240Vac	50/60	0	5dc	5	25	3	60950-1	20B	0	1
HTS-25FA-12	100-240ac	50/60	0	12dc	2.1	-	3	60950-1, 2nd Ed + AM1	20B	0	1
HTS-25FA-15	100-240ac	50/60	0	12dc	2.1	-	3	60950-1, 2nd Ed + AM1	20B	0	1
HTS-25FA-24	100-240ac	50/60	0	12dc	2.1	-	3	60950-1, 2nd Ed + AM1	20B	0	1
HTS-25FA-48[*r]	100-240ac	50/60	0	48dc	0.57	-	3	60950-1, 2nd Ed + AM1	20B	0	1
HTS-25FA-5	100-240ac	50/60	0	5dc	5	-	3	60950-1, 2nd	20B	0	1


								Ed + AM1			
HTS-320F-12 [*r]	100-120 / 200-240ac	50/60	0	12dc	25	-	3	60950-1	20B	0	0
HTS-320F-13.5 [*r]	100-120 / 200-240ac	50/60	0	13.5dc	22	-	3	60950-1	20B	0	0
HTS-320F-15 [*r]	100-120 / 200-240ac	50/60	0	15dc	20	-	3	60950-1	20B	0	0
HTS-320F-24 [*r]	100-120 / 200-240ac	50/60	0	24dc	12.5	-	3	60950-1	20B	0	0
HTS-320F-27 [*r]	100-120 / 200-240ac	50/60	0	27dc	11	-	3	60950-1	20B	0	0
HTS-320F-36 [*r]	100-120 / 200-240ac	50/60	0	36dc	8.3	-	3	60950-1	20B	0	0
HTS-320F-48	100-120 / 200-240ac	50/60	0	48.1dc	7.1	333	3	60950-1	20B	0	0
HTS-320F-5	100-120 / 200-240ac	50/60	0	5.1dc	54.8	240	3	60950-1	20B	0	0
HTS-320F-7.5	100-120 / 200-240ac	50/60	0	7.7dc	38.1	270	3	60950-1	20B	0	0
HTS-35FB-12[*r]	100-240ac	50/60	0	5dc	7	-	3	60950-1, 2nd Ed + AM1	20B	1	1
HTS-35FB-15[*r]	100-240ac	50/60	0	5dc	7	-	3	60950-1, 2nd Ed + AM1	20B	1	1
HTS-35FB-24[*r]	100-240ac	50/60	0	5dc	7	-	3	60950-1, 2nd Ed + AM1	20B	1	1
HTS-35FB-48[*r]	100-240ac	50/60	0	5dc	7	-	3	60950-1, 2nd Ed + AM1	20B	1	1
HTS-35FB-5[*r]	100-240ac	50/60	0	5dc	7	-	3	60950-1, 2nd Ed + AM1	20B	1	1
HTS-40F-12[*r]	100-240ac	50/60	0	12dc	3.5	-	3	60950-1	20B	0	1
HTS-40F-15[*r]	100-240ac	50/60	0	15dc	2.8	-	3	60950-1	20B	0	1
HTS-40F-24[*r]	100-240ac	50/60	0	24dc	1.8	-	3	60950-1	20B	0	1
HTS-40F-5[*r]	100-240ac	50/60	0	5dc	8	-	3	60950-1	20B	0	1
HTS-50FE-12	100-240ac	50/60	0	12.04dc	6.39	51.33	3	60950-1	20B	0	1
HTS-50FE-15	100-240ac	50/60	0	15.04dc	6.24	57.01	3	60950-1	20B	0	1
HTS-50FE-24	100-240ac	50/60	0	24.0dc	3.65	67.96	3	60950-1	20B	0	1
HTS-50FE-48	100-240ac	50/60	0	48.05dc	2.2	70.64	3	60950-1	20B	0	1
HTS-50FE-5	100-240ac	50/60	0	5.01dc	19.3	58.66	3	60950-1	20B	0	1
HTS-60F-12	100-240ac	50-60	0	12dc	5	-	3	60950-1	20B	0	1
HTS-60F-15	100-240ac	50-60	0	15dc	4	-	3	60950-1	20B	0	1
HTS-60F-24	100-240ac	50-60	0	24dc	2.5	-	3	60950-1	20B	0	1
HTS-60F-5	100-240ac	50-60	0	5dc	12	-	3	60950-1	20B	0	1
HTSP-320F-	100-240ac	50/60	0	12dc	25	-	3	60950-1	-	0	0

12 [*r]											
HTSP-320F-13.5[*r]	100-240ac	50/60	0	13.5dc	22	-	3	60950-1	-	0	0
HTSP-320F-15[*r]	100-240ac	50/60	0	15dc	20	-	3	60950-1	-	0	0
HTSP-320F-24[*r]	100-240ac	50/60	0	24dc	13	-	3	60950-1	-	0	0
HTSP-320F-27[*r]	100-240ac	50/60	0	27dc	11.7	-	3	60950-1	-	0	0
HTSP-320F-3.3 [*r]	100-240ac	50/60	0	3.3dc	55	-	3	60950-1	-	0	0
HTSP-320F-48[*r]	100-240ac	50/60	0	48dc	6.7	-	3	60950-1	-	0	1
HTSP-320F-5 [*r]	100-240ac	50/60	0	5dc	55	-	3	60950-1	-	0	0
HTSP-320F-7.5 [*r]	100-240ac	50/60	0	7.5dc	40	-	3	60950-1	-	0	0
HTSP-600F-12[*r]	200-240ac	50-60	0	12dc	50	-	3	60950-1	20B	0	1
HTSP-600F-15[*r]	200-240ac	50-60	0	15dc	40	-	3	60950-1	20B	0	1
HTSP-600F-18[*r]	200-240ac	50-60	0	18dc	33.3	-	3	60950-1	20B	0	1
HTSP-600F-24[*r]	200-240ac	50-60	0	24dc	25	-	3	60950-1	20B	0	1
HTSP-600F-36[*r]	200-240Vac	50-60	0	36dc	16.6	-	3	60950-1	20B	0	1
HTSP-600F-48[*r]	200-240Vac	50-60	0	48dc	12	-	3	60950-1	20B	0	1
HTSP-600F-5[*r]	200-240Vac	50-60	0	5dc	100	-	3	60950-1	20B	0	1
HTSP-600F-60[*r]	200-240Vac	50-60	0	60dc	10	-	5	60950-1	20B	0	1
HTSP-600F-9[*r]	200-240Vac	50-60	0	9ac	66	-	3	60950-1	20B	0	1
HTSP-800F-12[*r]	200-240Vac	50-60	0	12dc	66	-	3	60950-1	20B	0	1
HTSP-800F-15[*r]	200-240Vac	50-60	0	15dc	53	-	3	60950-1	20B	0	1
HTSP-800F-18[*r]	200-240Vac	50-60	0	18dc	44.4	-	3	60950-1	20B	0	1
HTSP-800F-24[*r]	200-240Vac	50-60	0	24dc	33	-	3	60950-1	20B	0	1
HTSP-800F-36[*r]	200-240Vac	50-60	0	36dc	22.2	-	3	60950-1	20B	0	1
HTSP-800F-48[*r]	200-240Vac	50-60	0	48dc	16	-	3	60950-1	20B	0	1
HTSP-800F-60[*r]	200-240Vac	50-60	0	60dc	13	-	5	60950-1	20B	0	1
HTSP-800F-9[*r]	200-240Vac	50-60	0	9dc	88	-	3	60950-1	20B	0	1
HTT-120F-	100-120, 220-	50/60	0	5dc	11	-	3	60950-1	-	0	0

A[*r]	240ac										
				12dc	5	-	3				
				-5dc	1	-	3				
HTT-120F-B	100-120, 220-240ac	50/60	0	5dc	17.7	83.2	3	60950-1	-	0	0
				12dc	16.8	97.7	3				
				-11.6dc	5.6	31.8	3				
HTT-120F-C[*r]	100-120, 220-240ac	50/60	0	5dc	10	-	-	60950-1	-	0	0
				15dc	3.5	-	-				
				-15dc	1	-	-				
HTT-120F-D[*r]	100-120, 220-240ac	50/60	0	5dc	8	-	3	60950-1	-	0	0
				12dc	2.5	-	3				
				24dc	2	-	3				
HTT-40F-A[*r]	100-240ac	50/60	0	5dc	3	-	3	60950-1	20B	0	1
				12dc	2	-	3				
				-5dc	0.5	-	3				
HTT-40F-B[*r]	100-240ac	50/60	0	5dc	3	-	3	60950-1	20B	0	1
				12dc	2	-	3				
				-12dc	0.5	-	3				
HTT-40F-C[*r]	100-240ac	50/60	0	5dc	3	-	3	60950-1	20B	0	1
				15dc	1.5	-	3				
				-15dc	0.5	-	3				
HTT-60F-A	100-240ac	50-60	0	5dc	5	-	3	60950-1	20B	0	1
				12dc	2.5	-	3				
				-5dc	0.5	-	3				
HTT-60F-B	100-240ac	50-60	0	5dc	5	-	3	60950-1	20B	0	1
				12dc	2.5	-	3				
				-12dc	0.5	-	3				
HTT-60F-C	100-240ac	50-60	0	5dc	4	-	3	60950-1	20B	0	1
				15dc	2	-	3				
				-15dc	0.5	-	3				
HUS-100FG-12[*r]	100-120V, 200-240ac	50/60	0	12dc	8.5	-	3	60950-1, 2nd Ed + AM1	20B	1	1
HUS-100FG-15[*r]	100-120, 200-240ac	50/60	0	15	7	-	3	60950-1, 2nd Ed + AM1	20B	1	1
HUS-100FG-24[*r]	100-120, 200-240ac	50/60	0	24	4.5	-	3	60950-1, 2nd Ed + AM1	20B	1	1
HUS-100FG-48[*r]	100-120, 200-240ac	50/60	0	48	2.3	-	3	60950-1, 2nd Ed + AM1	20B	1	1
HUS-100FG-5[*r]	100-120V, 200-240ac	50/60	0	5dc	20	-	3	60950-1, 2nd Ed + AM1	20B	1	1

HUS-150FK-12[*r]	100-120/200-240ac	50/60	0	12dc	12.5	-	3	60950-1, 2nd Ed + AM1	20B	0	1
HUS-150FK-15[*r]	100-120/200-240ac	50/60	0	15dc	10	-	3	60950-1, 2nd Ed + AM1	20B	0	1
HUS-150FK-24[*r]	100-120/200-240ac	50/60	0	24dc	6.5	-	3	60950-1, 2nd Ed + AM1	20B	0	1
HUS-150FK-3.3[*r]	100-120/200-240ac	50/60	0	3.3dc	30	-	3	60950-1, 2nd Ed + AM1	20B	0	1
HUS-150FK-48[*r]	100-120/200-240ac	50/60	0	48dc	3.3	-	3	60950-1, 2nd Ed + AM1	20B	0	1
HUS-150FK-5[*r]	100-120/200-240ac	50/60	0	5dc	26	-	3	60950-1, 2nd Ed + AM1	20B	0	1
HUS-150FK-7.5[*r]	100-120/200-240ac	50/60	0	7.5dc	20	-	3	60950-1, 2nd Ed + AM1	20B	0	1
HUS-75FG-12[*r]	100-120V, 200-240ac	50/60	0	12dc	6.3	-	3	60950-1, 2nd Ed + AM1	20B	1	1
HUS-75FG-15[*r]	100-120V, 200-240ac	50/60	0	15dc	5	-	3	60950-1, 2nd Ed + AM1	20B	1	1
HUS-75FG-24[*r]	100-120V, 200-240ac	50/60	0	24dc	3.2	-	3	60950-1, 2nd Ed + AM1	20B	1	1
HUS-75FG-48[*r]	100-120V, 200-240ac	50/60	0	48dc	1.6	-	3	60950-1, 2nd Ed + AM1	20B	1	1
HUS-75FG-5[*r]	100-120V, 200-240ac	50/60	0	5dc	15	-	3	60950-1, 2nd Ed + AM1	20B	1	1

[*r] - Output values are rated.

Marking: Company name, model designation and the Recognized Component Mark,  on the product or on the smallest unit container in which the product is packaged.

Last Updated on 2018-06-02

[Questions?](#)

[Print this page](#)

[Terms of Use](#)

[Page Top](#)

© 2018 UL LLC

The appearance of a company's name or product in this database does not in itself assure that products so identified have been manufactured under UL's Follow-Up Service. Only those products bearing the UL Mark should be considered to be Certified and covered under UL's Follow-Up Service. Always look for the Mark on the product.

UL permits the reproduction of the material contained in the Online Certification Directory subject to the following conditions: 1. The Guide Information, Assemblies, Constructions, Designs, Systems, and/or Certifications (files) must be presented in their entirety and in a non-misleading manner, without any manipulation of the data (or drawings). 2. The statement "Reprinted from the Online Certifications Directory with permission from UL" must appear adjacent to the extracted material. In addition, the reprinted material must include a copyright notice in the following format: "© 2018 UL LLC".