

LCD Modules – 167/168



- 6-digit LCD display counter for panel or PCB mount (removable mounting)
- 3 V DC power supply
- Current consumption <math>< 5 \mu\text{A}</math> (- Inputs TTL/CMOS compatible
- Electrical zero reset

Type 167:

count mode: adding

Type 168:

count mode: adding/subtracting

1 count input

1 direction input

Applications:

Event counting,
position-, length- and distance
measurement, PCB counter

Technical data:

Power supply:	2.6 ... 3.4 VDC
Current consumption:	typical 5 μA , 10 μA at 10 kHz
Display:	LCD, 6-digit, 6 mm [0.236"] high
Count range:	999 999
Overflow	
Type 167:	from 999 999 to zero
Type 168:	adding from 999 999 to zero subtracting from zero to 999 999
Count input:	max. count frequency 10 kHz min. pulse time 50 μs negative triggered (NPN)
0 reset:	min. pulse time 15 ms negative triggered (NPN)

Direction input
(Only Type 168):

switch to 0 V or negative triggered
(NPN)

open input: count mode adding

Input to zero: 0 V: count mode subtract.

Interference resistance: EN 50081-1

Emitted interference: EN 55022 class B

Working temperature: $-10 \dots +60 \text{ }^\circ\text{C}$ [14 ... 140 $^\circ\text{F}$]

Storage temperature: $-10 \dots +60 \text{ }^\circ\text{C}$ [14 ... 140 $^\circ\text{F}$]

Housing: clear polycarbonate and
black ABS housing

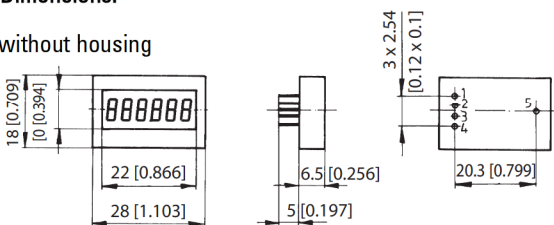
Protection: IP 40

Weight: 7.5 g [0.265 oz]

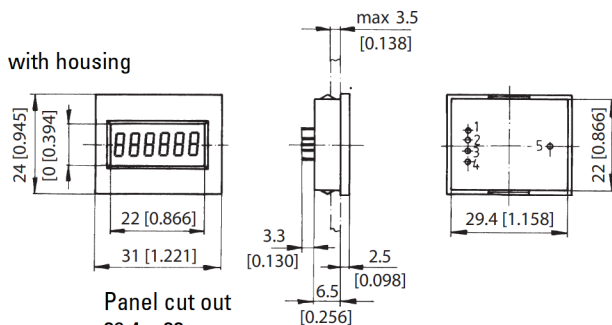
Electrical connection: PCB pin \varnothing 0.4 mm [0.016"]

Dimensions:

without housing

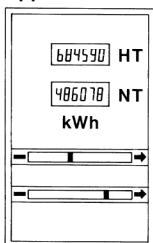


with housing



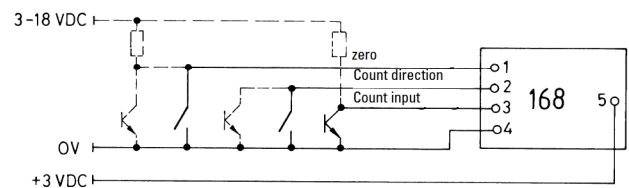
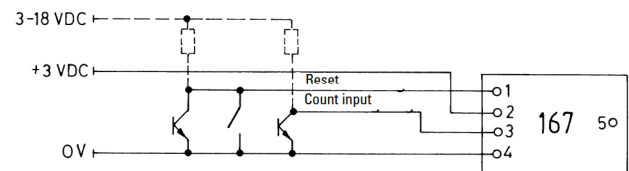
Panel cut out
29.4 x 22 mm
[1.158 x 0.866"]

Applications:



kWh meter

Connections:



Pin-No.	Function	
	Type 167	Type 168
1	Reset	Reset
2	+ 3 VDC	Count direction
3	Count input	Count input
4	0 V	0 V
5	0 V	+3 VDC

Order code:

Type 167: 0.167.012.000*

Type 168: 0.168.012.000*

Delivery specification:

LCD module

Operating manual

*standard stock model