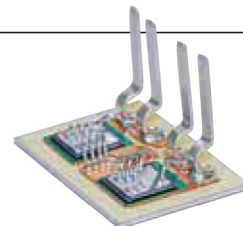


Power Relays

All our solid state relays fitted with back to back thyristors (power products : single phase, two phase, three phase) now use TMS² technology with a very high life expectancy compared to the majority of products on the market (application note on request)



TMS² Technology 4th generation

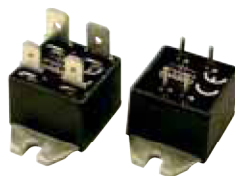
SOFTLIFE Range - "Get rid of your heatsinks!"



Relays combining the assets of dual technology : solid state and electromechanical. These relays are designed to switch current up to 30A without the need of heatsink. Relays with LED and RC and VDR protection.

PRODUCT REFERENCE	Switching current	Switching voltage	Control voltage	I _t	Protéc.	Specifications	Dimensions mm
SVX963350	30A	12-420VAC	20-30VDC	265A ² s	RC-VDR	mixed relays	44,5x61,3x45

SF Range



Miniature relays with "FASTON" terminals or PCB terminals.

PRODUCT REFERENCE	Switching current	Switching voltage	Control Voltage	R Entrée	Spécifications	Dimensions mm
SF541310	10A	12-280VAC	4-30VDC	1 kΩ	zero crossed, "FASTON" terminals	21 x 35,5 x 15
SF542310	10A	12-280VAC	4-30VDC	1 kΩ	zero crossed, PCB terminals	
SF546310	20A	12-280VAC	4-30VDC	1 kΩ	zero crossed, "FASTON" terminals	

These products should be mounted on heatsinks in order to reach nominal current.

SCF Range



To control resistive loads. "FASTON" terminals.

PRODUCT REFERENCE	Switching current	Switching voltage	Peak voltage	Control voltage	Input R	LED	I _t	Protéc.	Dimensions mm
SCF42160	25A	12-280VAC	600V	4-30VDC	600 Ω	yes	312A ² s	---	21 x 35,5 x 15
SCF42324	25A	12-280VAC	600V	12-30VDC	1 kΩ	no	312A ² s	VDR	
SCF62160	25A	24-600VAC	1200V	5-30VDC	600 Ω	yes	265A ² s	---	

Other references (corresponding to the SC9 range) are available : please contact us.

These products should be mounted on heatsinks in order to reach nominal current.

E option "large Entrax" and L option "Faston" 4,8mm on request.

SCFL range EMC optimised (low electromagnetic emission – low RFI)



This relay is designed for use in applications where low electromagnetic emission is essential : household and electrical appliances, information technology and medical equipments. In compliance with EN 50081-1 Generic Emission Standards for Residential and meets CISPR 22 requirements.

PRODUCT REFERENCE	Switching current	Switching voltage	Peak voltage	Control voltage	Input R	I _t	Dimensions mm
SCFL42100	25A	12-280VAC	600V	4-30VDC	1 kΩ	312A ² s	44,5 x 58,2 x 32
SCFL62100	25A	24-440VAC	1200V	5-30VDC	1 kΩ	312A ² s	44,5 x 58,2 x 32

These products should be mounted on heatsinks in order to reach nominal current.

SP7/SP8 Range

This new range enriches the products with FASTON terminals.

In a full plastic case, these relays can nevertheless switch up to 12 A AC51.

These relays are appropriate for any type of load thanks to high immunity components and an integrated over-voltage protection a combined with 800 Upeak power components.

PRODUCT REFERENCE	Switching current	Switching voltage	Peak voltage	Control voltage	Input R	I _t	Specifications	Dimensions mm
SP752120	12A	12-280VAC	800V	3-32VDC	1 kΩ	340A ² s	random	38x66,8x22
SP852120	12A	12-280VAC	800V	4-32VDC	1 kΩ	340A ² s	zero-cross	38x66,8x22

These products should be mounted on heatsinks in order to reach nominal current.

