

Mechanical characteristics:

Speed¹⁾: max. 12000 min⁻¹
 Rotor moment of inertia: ca. 6x10⁻⁶ kgm²
 Starting torque: <0,01 Nm
 Weight: ca. 0,4 kg
 Protection acc. to EN 60 529: IP 65
 Working temperature: -30°C up to +85°C²⁾
 Shaft: stainless steel, H7
 Shock resistance acc. to DIN-IEC 68-2-27: 2500 m/s², 6 ms
 Vibration resistance acc. to DIN-IEC 68-2-6: 100 m/s², 10...2000 Hz

1) for continuous operation max. 6000 min⁻¹
 2) non – condensing

Electrical characteristics:

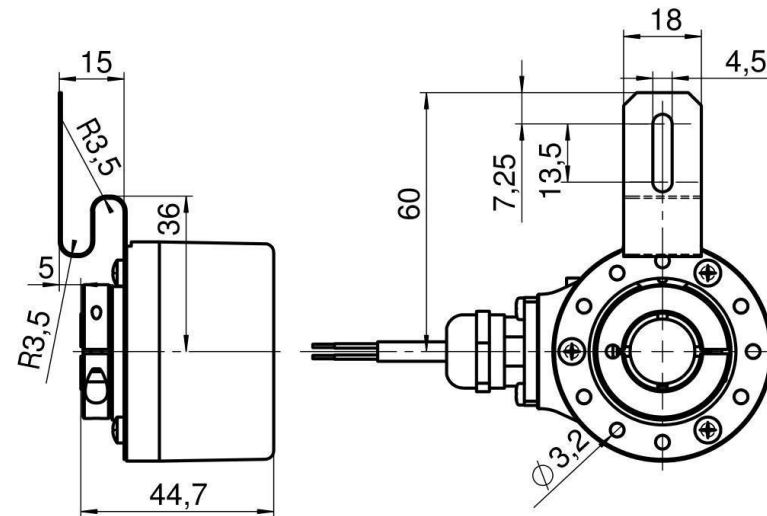
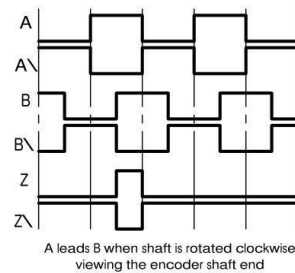
Output circuit: RS422 (TTL-komp.)
 Supply voltage: 5V ±5%
 Power consumption(no load): typ. 40 mA
 (with inverted signals): max. 90 mA
 Permissible load/channel: max. ±20 mA
 Pulse frequency: max. 300 kHz
 Signal level high: min. U_B 2,5V
 Signal level low: max. 0,5 V
 Rise time tr: max. 200ns
 Fall time tf: max. 200ns
 Short circuit proof outputs¹⁾: yes²⁾
 Reverse connection protection at Ub: no
 Conforms to CE requirements acc. to EN 61000-6-1, EN 61000-6-4 and EN 61000-6-3


1) when supply voltage correctly applied
 2)

Wiring diagram:

Signal	Color
0V	WH
+UB	BN
0V Sens.	GY/PK
+UB Sens.	RD/BU
A	GN
A/	YE
B	GY
B/	PK
Z	BU
Z/	RD

Signals:



			Unit of measurement millimeter		 Fritz Kübler GmbH Zähl- und Sensortechnik 78054 VS-Schwenningen
2	16.03.06	Murer	Tolerances unless otherwise specified ISO 2768 mH	Customer Type:	
1	25.01.06	Murer		encoder	drawing ID.
Index	Date	Name			